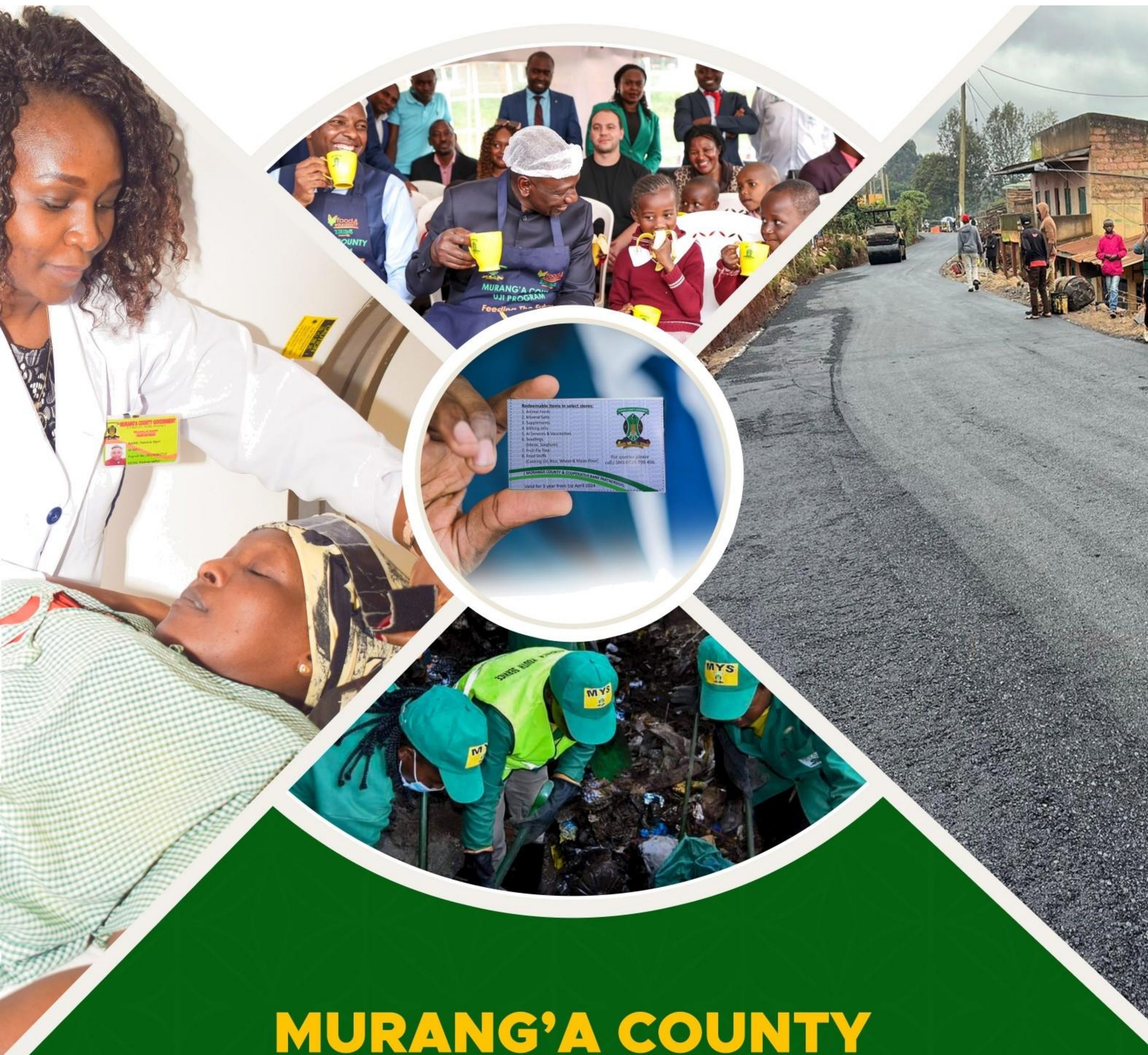




# MURANG'A COUNTY GOVERNMENT



## MURANG'A COUNTY — FLAGSHIP PROJECTS —



# VISION

## VISION STATEMENT

A socially and economically empowered County.

# MISSION

## MISSION STATEMENT

We empower Murang'a residents socially and economically by adopting parity and a people - centred governance model

## TAGLINE

*Kuhingio Ciironiro*

# FLAGSHIP PROGRAMMES

1. Health —Kang'atacare, maternal health support programme.
2. Smart city —Roads and storm water drainage.
3. Agriculture —Mango/milk subsidy —GMR.
4. Education —Bursary, uji programme for all ECDEs, ECDE centres refurbishment.
5. Automation - Digitisation of revenue collection, land management, hospital operations and all county processes.
6. Murang'a Youth Service - The MYS programme employs 1,050 youths across the county every three months.



# HEALTH

## **k KANG'ATACARE PROGRAMME**

40,000 households (160,000 beneficiaries) have benefited from the Murang'a universal health cover (Kang'ataCare). The 40,000 vulnerable households were identified in a consultative process involving the community.





## BENEFITS

- > Comprehensive inpatient care in all health facilities
- » Outpatient care in contracted health facilities.
- » Optical and dental care in government and private facilities.
- » Last Expense of 100,000/=single claim for principal members who lose their dependant.
- ” Free ambulance evacuation from an accident scene or a health facility.
- k Ksh 500,000 treatment abroad.





# HOSPITALS INFRASTRUCTURE

\*The County Government of Murang'a is building new health facilities to decongest Murang'a Level 5 Hospital which is currently attending to 1500 patients per day.

## **HOSPITALS BUILT SO FAR:**

- 1. Nyakianga (ongoing) in Mathioya Constituency.**
- 2. Kangema level 4 (renovation and borehole) in Kangema constituency.**
- 3. Maragua level 4 hospital (2 new wards) in Maragua Constituency.**
- 4. Murang'a Level 5 (new Casualty wards ongoing) in Kiharu Constituency.**
- 5. Kandara level 4 hospital (new wards) in Kandara Constituency.**
- 6. Kiwara level 4 hospital (completion of new wards).**
- 7. Kenneth Matiba Level 5 Kenol phase 1**

## **SOME OF THE HEALTH CENTERS AND DISPENSARIES BUILT SO FAR:**

1. Ihigaini health centre in Maragua Constituency.
2. Mbari ya Hiti dispensary in Kiharu Constituency.
3. Thuita dispensary in Mathioya Constituency.
4. Gatitu dispensary in Kandara Constituency.
5. Karurumo health centre in Kangema Constituency.
6. Gakuyu dispensary in Kigumo Constituency.





BEFORE



AFTER

## SMART CITY PROGRAMME

Murang'a County Government led by HE Governor Irungu Kang'ata under Community projects came up with "Smart City" project, a programme to upgrade and tarmac roads, beautify towns and improve facilities in towns. The programme is setting a good foundation for the growth of urban centres in Murang'a.

Murang'a towns which have so far benefited under this Smart City programme this year include:

1. Maragua in Maragua Constituency.
2. Gatura in Gatanga Constituency.
3. Kabati in Kandara Constituency.
4. Kangari in Kigumo Constituency.
5. Murang'a Town in Kiharu Constituency.
6. Kangema in Kangema Constituency.
7. Kiriaini in Mathioya Constituency.
8. Kahatia in Kiharu Constituency.
9. Kaguku in Gatanga Constituency.
10. Gacharage in Kandara Constituency.
11. Kanyenyaini in Kangema Constituency.
12. Zebka and Kenol Town in Maragua Constituency.
13. Kamune (ongoing) in Mathioya Constituency.
14. Cabros Murang'a Town in Kiharu Constituency.

FULFILLING THE MANIFESTO





## INUA MKULIMA SUBSIDY PROGRAMME

This is an improved subsidy programme for Milk and Mango farmers. The County issues farmers affiliated to Cooperatives the Inua Mkulima Card, which is loaded with Sh2,400 every three months. Farmers can redeem the cash for various services and products. The County Government has partnered with Amica Sacco and Cooperative Banks for this programme. The Inua Mkulima Card can be redeemed for;

- » Farm Inputs e.g., seedlings, animal feeds & mineral salts.
- » Food stuff e.g., rice, maize & wheat flour and cooking fat.
- » School fees to public secondary schools within the County who hold a Cooperative Bank Account.
- » Payment of hospital charges (SHIF) as from July 2024.





## **SORGHUM FARMING**

The County has partnered with East Africa Breweries Limited to contract farmers in Murang'a South to grow sorghum for the company.

- > The County and EABL distributed seedlings to 2,000 farmers to promote sorghum farming.
- > Farmers receive cash payment of Ksh48 per kg of sorghum.
- » The partnership between the County Government and EABL ensures that farmers have a guaranteed price and market for their sorghum.





## ECDE UJI PROGRAMME

- > 42,000 children in 700 ECDE centers take uji (porridge) everyday.
- » Aimed at ensuring hunger barriers to ECDE education are removed and children have a conducive learning environment.
- » Good and standardized nutrition for all pupils.
- » The uji programme has led to an Increase in enrolment of P pils.

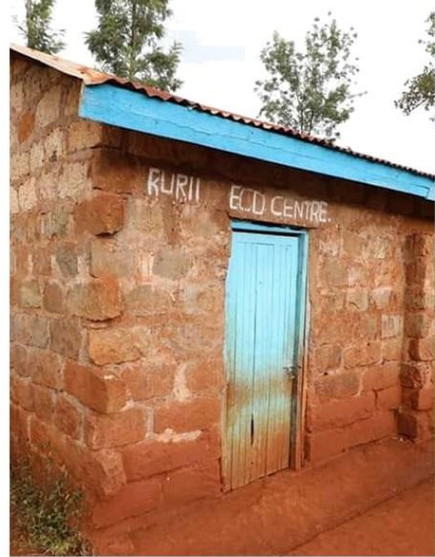




## COMMUNITY PROJECTS (ECDEs)

- » Murang'a County Government under HE Governor Irungu Kang'ata has started the Community Projects programme. The programme includes renovating and constructing new ECDE Centres across the county. The new ECDE Centres have terrazzo floors, modern ceilings and drawings to teach children.
- » Murang'a has 700 ECDE Centres and in the 2022-2023 financial year, we have rehabilitated 126 ECDE Centres and built 13 new ECDE centres.
- » In the 2023-24 financial year, the County Government intends to renovate and construct 250 centres. In the Financial Year 2024/25, all the remaining ECDES will be completed.





Rurii ECD Centre before and after Gatari Ward

King'ong'i ECDE before and after Gatari Ward



Kamoro ECDE before and after Ithiru Ward



Kinyona ECDE before and after Kinyona Ward



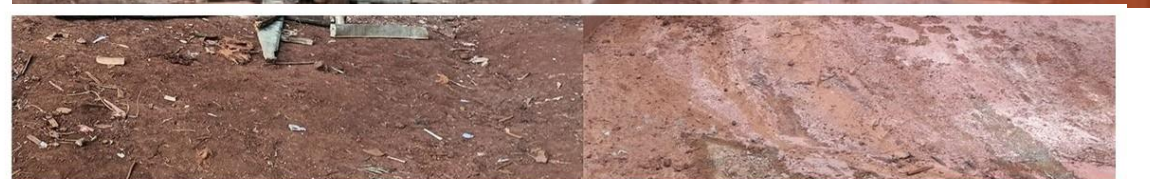
Kiangima ECDE before and after Kiru Ward



Wanyaga ECDE before and after Kariara Ward



Kaharati ECDE before and after Kamahuha Ward



Gatunduini ECDE before and after Muguru Ward



Kyaume ECDE before and after Ithanga Ward



Gatwikira ECDE before and after Kakuzi/mitubiri Ward



# MURANG'A CHILD PROGRAMME

( MWANA WA MURANG'A )

1. Nyota zetu bursaries II January, May & September.
2. Best pupils number 1, 2, 3, 4 & 5 bursaries II January
3. Ward bursaries II January
4. Orphans bursaries II January
5. People with disabilities bursaries II January
6. University bursaries II September
7. Top KCSE day scholars will be supported entirely from 2025

## MURANG'A CHILD PROGRAMME

## INUA MASOMO PROGRAMME

The Inua Masomo Programme awards bursaries to the top 10 students in Forms 2, 3, and 4 in all day secondary schools across the county. Beneficiaries are selected based on their academic performance, with over 8,000 students currently benefiting from the initiative in Murang'a County.

### Why Inua Masomo?

**Merit-Based Selection** —The process is fair, as students are chosen purely on academic performance.

**Supporting Vulnerable Learners** —Most students in day schools come from disadvantaged backgrounds and often balance their studies with household responsibilities.

**Encouraging Healthy Competition** —The programme motivates students to strive for excellence, improving overall academic performance in day schools.

**Proven Success** —Day schools have produced top KCSE performers in the county, demonstrating that with adequate support, students can excel.

**Enhancing School Retention** —The initiative ensures a 100% retention rate of students in schools.

**Boosting the Local Economy** —By keeping resources within the county, the programme contributes to local economic development.

**Improving School Infrastructure** —Schools benefit from increased funding, allowing for the enhancement of learning facilities.





# AUTOMATION

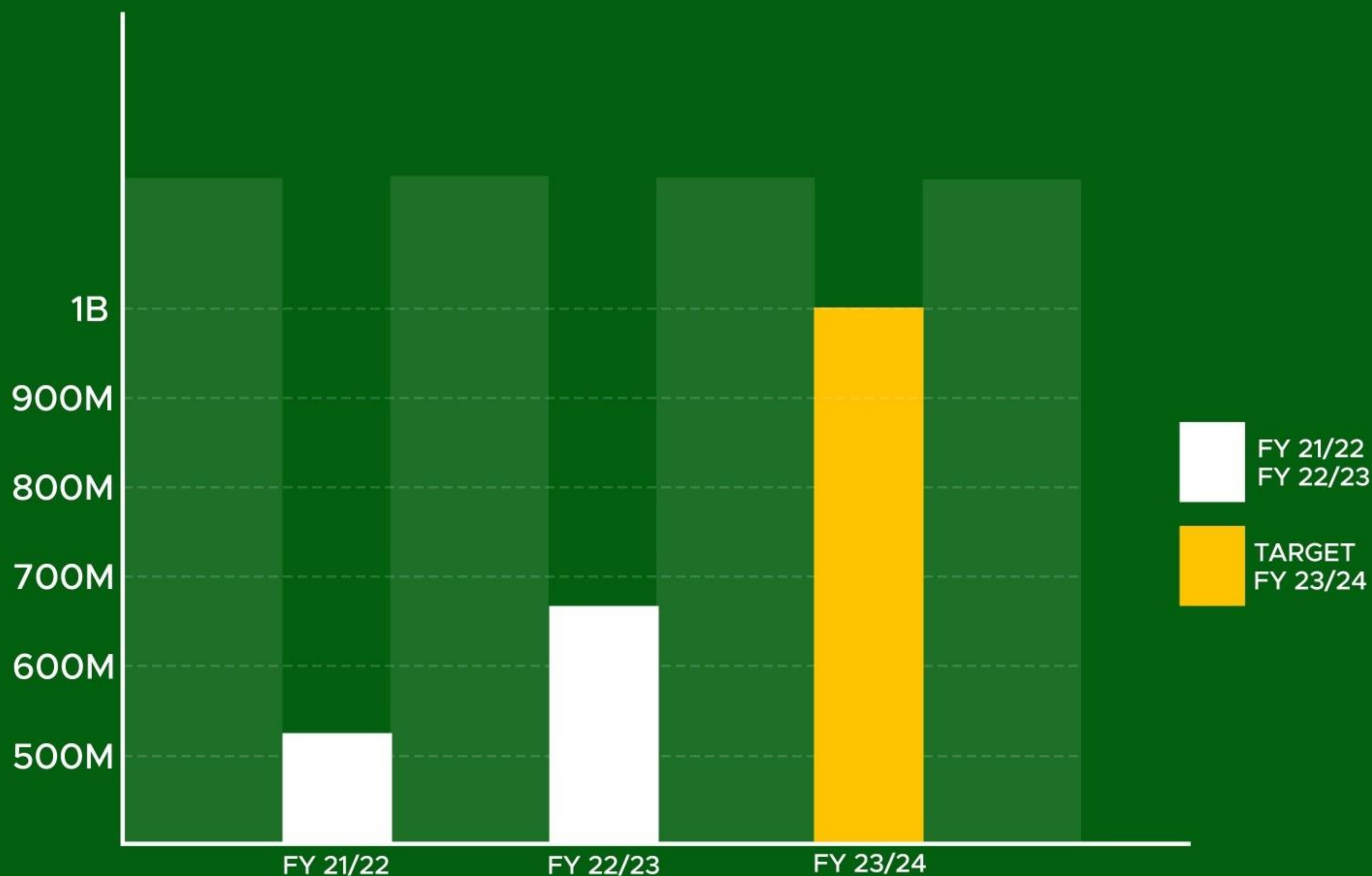
The following county revenue streams have been automated

- |             |              |                    |          |
|-------------|--------------|--------------------|----------|
| •f• Parking | «• Quarry    | t\$ Advertisement  | \$• Cess |
| •f• Market  | g Land       | «• social services | g Fire   |
| 4• Hospital | g Veterinary | g Public Health    | §• etc.  |

Murang'a Level 5 hospital digital systems comes with following benefits and many more:

- (a) Drugs inventory management
- (b) Eradicating manual cards
- (c) Wards monitoring
- (d) Queue monitoring
- (e) It can also be able to detect a spike in certain diseases and thus enable doctors to act before they spread further.





# REVENUE COLLECTION

## k Revenue performance for the County – FY 2023/2024- Sh1 Billion

- k Revenue performance for the last 2 years  
FY 22/23 ..... Sh682 Million  
FY 21/22 ..... Sh520 Million

## k Why do we need to raise revenue?

- (a) To fund flagship programmes.
- (b) To retain jobs-As per Public Finance Management Act, the wage bill should not exceed 35%. Currently Murang'a County is paying 42%. For this reason, Murang'a County is focusing on collecting more revenue to retain jobs.
- (c) To be the best county in service delivery to Murang'a citizens.



**Murang'a ni digital.  
Bonyeza \*267# kulipa  
County Government fees.**



Co-operative Bank is regulated by the Central Bank of Kenya



**PAY FOR ALL COUNTY SERVICES EASILY**  
Once you've registered, dial \*267#, then follow these simple steps.



**PARKING**

- Choose sub-county
- Select option 1 for parking
- Choose parking type
- Enter your vehicle registration no.
- Wait for M-Pesa STK, push to complete your payment



**MARKET**

- Choose sub-county
- Select option 2 for market
- Choose a market
- Enter your ID no.
- Wait for M-Pesa STK, push to complete your payment



**QUARRY**

- Choose sub-county
- Select option 3 for quarry
- Choose quarry zone
- Choose truck type
- Enter your vehicle registration no.
- Wait for M-Pesa STK, push to complete your payment



**HOSPITAL**

- Choose sub-county
- Select option 4 for hospital
- Choose service to pay for
- Enter amount
- Wait for M-Pesa STK, push to complete your payment



**VETERINARY SERVICES**

- Choose sub-county
- Select option 5 for veterinary services
- Select the service you want (e.g. vaccination, AI, meat inspection, etc.)
- Enter number of livestock
- Enter your ID no.
- Wait for M-Pesa STK, push to complete your payment



**LAND RATES**

- Choose your sub-county
- Select the service you wish to pay for (e.g. land rates, change of owner, etc.)
- Enter land rates number
- Enter name of owner
- Enter amount
- Wait for M-Pesa pop-up to enter your PIN and complete the transaction

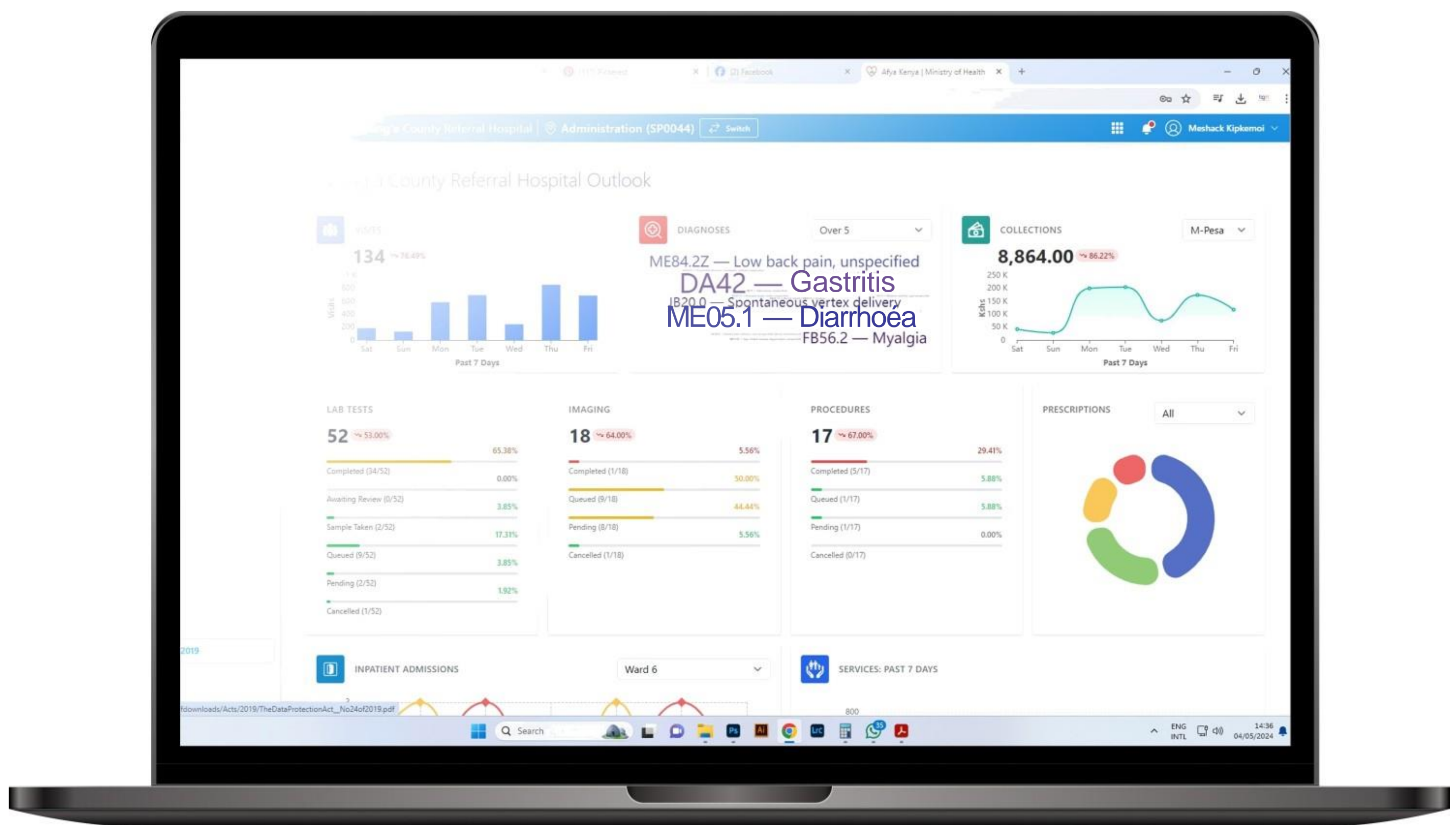
ct/t CO-OPERATIVE BANK

## **k OUR REVENUE COLLECTION STRATEGIES**

- Automating of revenue collection through \*267#
- + Identifying idle County Assets (e.g. Quarry, Abattoir) that we can lease out
- + Sealing revenue loopholes
- + Creating awareness among taxpayers
- Fighting corruption
- Fostering Integrity
- + Rewarding highest performing tax collectors
- 4 Since 2018, Murang'a County since (2018) has never raised taxes. We are focusing becoming efficient in tax collection.

**FULFILLING THE MANIFESTO**





# HEALTH

Murang'a Level 5 Hospital and all Level 4 Hospitals are fully automated. Benefits of the IT systems include:

- » It enables hospitals to procure medical supplies they need using the revenue that they generate.
- » The drug inventory management system tracks purchase and usage of medicine.
- » It eradicates manual cards for patients visiting hospitals.
- » Helps monitor queues and wards.
- + Detects a spike in certain diseases thus enabling doctors to act before they spread further.





# TELEMEDICINE PROGRAMME

Telemedicine is the use of digital communication technologies—such as video calls, mobile apps, and online messaging—to provide remote medical care. It allows patients to consult with healthcare professionals without the need for physical visits to hospitals or clinics.

This health initiative was established in response to the rising burden of chronic non-communicable diseases within the county.

## **KEY BENEFITS OF THE TELEMEDICINE PROGRAMME:**

**Bringing Healthcare Closer** —Patients register at designated local health centres and dispensaries to access telemedicine services.

**Enhanced Patient Care** —The programme enables access to specialists, ensures continuity of care through follow-ups and medication, and reduces travel costs and time for patients.

## **TELEMEDICINE FACILITIES IN EACH SUB-COUNTY:**

**Ithanga Sub-County:** Ithanga Health Centre & Mitubiri Health Centre.

**Gatanga Sub-County:** Gatungu Dispensary, Gatura Health Centre, Gathanji Dispensary & Mukurwe Dispensary.

**Kandara Sub-County:** Muruka Dispensary, Gacharage Dispensary, Kagunduini Dispensary, Ng'araria Dispensary, Mariaini Dispensary & Karimamwaro Dispensary.

**Kigumo Sub-County:** Sabasaba Health Centre, Muthithi Dispensary, Gikoe Health Centre, Kangari Health Centre & Kigumo Sub-County Hospital.

**Murang'a South:** Makuyu Health Centre, Kamahuha Health Centre, Kaharo Dispensary, Gikono Dispensary, Githuya Dispensary & Kambiti Dispensary.

**Kiharu Sub-County:** Mugeka Dispensary, Kambirwa Health Centre & Kiangage Dispensary.

**Kahuro Sub-County:** Kirogo Health Centre, Murarandia Health Centre, Rwathia Dispensary & Kanyenya-ini Health Centre.

**Kangema Sub-County:** Kiamara Health Centre, Rwathia Dispensary & Kanyenya-ini Health Centre.

**Mathioya Sub-County:** Wahundura Dispensary, Kamacharia Dispensary, Kiambuthia Dispensary, Nyangiti Health Centre, Kiriaini Dispensary & Nyakianga Health Centre.





## YOUTH AND SPORTS

We are committed to the empowerment of our youth by helping them nurture and unleash their talents in sports. In addition to talent promotion, engagement in sports keeps the youth physically fit and mentally productive.

19.

|| FULFILLING THE MANIFESTO ||





## **MURANG'A YOUTH SERVICE**

The MYS programme employs 1,050 youths across the county every three months. The youth recruited under this programme sweep and keep our towns clean for two months. They are then be enrolled for short TVET courses of their choice for one month. Upon completion of the course, they are provided with Kshs 15,000 to start a business. After the three months, other youths are recruited for the same programme.

This is in a continued effort by the County Government to reduce the rate of unemployment among the youth in Murang'a County.





# SOLARISATION

The County Government has taken the initiative to solarise boreholes and health centres in the County in an effort to reduce the power bills.

# BOREHOLES

The County Government is drilling boreholes to ease access to clean water to the residents who have had no close source of clean water for years.

- » Yakarengo Primary Borehole in Gitugi Ward.
- » Kangema Hospital Borehole in Muguru Ward.
- Muthithi Community Borehole in Muthithi Ward.
- » Mithi-ini Community Borehole in Makuyu Ward.
- » Mbogoini Primary in Kahumbu Ward.
- » Nanga Borehole in Kakuzi/Mitumbiri Ward.
- » Kangure Borehole in Gaturi Ward.
- » Thungururu/Athara Community Borehole in Kimorori Ward.
- » Mutitu Primary Borehole in Ithiru Ward.
- » Mihang'o Borehole in Kambiti ward.
- » Kagundui-ni Borehole in Kagunduini ward.
- » Kitooni Borehole in Ithanga ward.
- » Wahu Borehole in Ruchu ward.
- » Kigio and Kiyaume Boreholes in Gatanga Constituency.
- » Kenol and Mumbu Boreholes in Maragua Constituency.
- Turuturu and Gikindu Boreholes in Kigumo Constituency.
- » Kaigwa and Kagongo Boreholes in Gaturi Ward.







# MARKETS

The County Government is currently building markets across the County to provide traders who operated by the roadside with space, accommodate more business people and shield them from extreme weather conditions.

## MARKETS BUILT SO FAR:

1. Kambiti Market in Constituency.
2. Ichichi Market in Kangema Constituency.
3. Kihoya Market in Kangema Constituency.
4. Karuri Market in Kigumo Constituency.
5. Kandara Market in Kandara Constituency.
6. Gitugi market in Mathioya Constituency.
7. Cabros Kihumbuini market in Gatanga Constituency.
8. Mununga Market in Kigumo Constituency.
9. Kamune Market in Mathoko Constituency.





# MAIZE AND FERTILIZER DISTRIBUTION PROGRAMME

a The County Government registered and verified 57,975 farmers for the distribution of hybrid maize seeds and fertilizer.

\* The maize seeds and fertilizer were sourced from national institutions, including Simlaw Seeds and the Kenya Agricultural and Livestock Research Organization (KARLO).

a Each farmer received 2 kg of maize seeds, 8 kg of planting fertilizer, and 8 kg of top-dressing fertilizer.

a The maize seeds came in various varieties, tailored to suit the different climatic zones within the county.

## **PROGRAMME OBJECTIVES.**

1. Boost food security by increasing maize production for local consumption.
2. Commercialize maize farming to enhance farmers' income.
3. Provide certified seeds to address the issue of counterfeit seeds.





# **MURANG\*A COUNTY GOVERNMENT**

**FULFILLING THE  
MANIFESTO**